



Cotton Seed Oil Cake

MARKET MOVEMENT

MCX MARKET

Commodity	Open	High	Low	Close	Rs. Chg	% Chg	Op Int	% Chng Oi	Volume
COTTON 30JUN2021	24030.00	24490.00	24030.00	24380.00	450.00	1.88	5784	-20.92	3223.00
COTTON 30JUL2021	24280.00	24740.00	24280.00	24610.00	420.00	1.74	2114	311.28	1740.00
COTTON 31AUG2021	0.00	0.00	0.00	24000.00	500.00	2.13	0	0.00	0.00
KAPAS 29APR2022	1326.00	1349.00	1326.00	1339.00	20.50	1.55	9	-35.71	14.00

NCDEX MARKET

COCUDAKL 20JUL2021	2940.00	3033.00	2930.00	3017.00	131.00	4.54	56160	16.25	81270.00
COCUDAKL 20AUG2021	3053.00	3106.00	3040.00	3096.00	113.00	3.79	2850	28.38	2680.00
COCUDAKL 20SEP2021	0.00	0.00	0.00	0.00	0.00	0.00	0	0.00	0.00
KAPAS 29APR2022	1324.00	1350.00	1321.00	1331.50	11.00	0.83	330	9.63	299.00

ICE MARKET (Intercontinental Exchange)

Commodity	Open	High	Low	Close	Rs. Chg	% Chg	Volume	Spread
CTN21 (Jul '21)	84.50	84.85	84.26	84.85	0.49	0.58	441	
CTV21 (Oct '21)	86.66	86.66	85.98	86.26	0.33	0.38	79	1.41
CTH22 (Mar '22)	85.27	85.69	85.27	85.69	0.45	0.53	283	-0.57

ZCE MARKET (Zhengzhou Commodity Exchange)

WQN21 (Jul '21)	15710.00	15760.00	15590.00	15665.00	60.00	0.38	1575	
WQU21 (Sep '21)	15945.00	15965.00	15770.00	15865.00	55.00	0.35	291803	200.00
WQX21 (Nov '21)	16125.00	16125.00	15955.00	16040.00	65.00	0.41	13749	175.00

CURRENCY MARKET

Commodity	Open	High	Low	Close	Rs. Chg	% Chg	Op Int	% Chng Oi	Volume
USDINR 28JUN2021	73.25	73.25	72.90	72.98	-0.21	-0.28	2453755	-0.85	1545791.00
USDINR 28JUL2021	73.36	73.36	73.16	73.22	-0.21	-0.29	332857	6.07	195667.00
USDINR 27AUG2021	73.48	73.62	73.43	73.49	-0.21	-0.28	135984	-1.05	23978.00

Calendar Spreads Snapshot

Commodity	Spread	P. Spread	Change
COTTON JUL - JUN	230.00	260.00	-30.00
COTTON AUG - JUL	-610.00	-690.00	80.00
COTTON AUG - JUN	-380.00	-430.00	50.00
COCUDAKL AUG - JUL	79.00	97.00	-18.00
COCUDAKL SEP - AUG	-3096.00	-2983.00	-113.00
COCUDAKL SEP - JUL	-3017.00	-2886.00	-131.00

Open Interest Snapshot

Commodity	Last	OI	Status
COTTON 30JUN2021	24380	5784	Short Covering
COTTON 30JUL2021	24610	2114	Fresh Buying
COTTON 31AUG2021	24000	0	Short Covering
COCUDAKL 20JUL2021	3017	56160	Fresh Buying
COCUDAKL 20AUG2021	3096	2850	Fresh Buying
COCUDAKL 20SEP2021	0	0	Long Liquidation

Commodity Market Daily Trading Levels

MCX MARKET

Commodity	Close	Support 3	Support 2	Support 1	Pivot Point	Resist 1	Resist 2	Resist 3	Trend
COTTON 30JUN2021	24380.00	23650.00	23840.00	24110.00	24300.00	24570.00	24760.00	25030.00	Positive
COTTON 30JUL2021	24610.00	23880.00	24080.00	24340.00	24540.00	24800.00	25000.00	25260.00	Positive
COTTON 31AUG2021	24000.00	16000.00	8000.00	16000.00	8000.00	16000.00	8000.00	16000.00	Positive
KAPAS 29APR2022	1339.00	1304.00	1315.00	1327.00	1338.00	1350.00	1361.00	1373.00	Positive

NCDEX MARKET

Commodity	Close	Support 3	Support 2	Support 1	Pivot Point	Resist 1	Resist 2	Resist 3	Trend
COCUDAKL 20JUL2021	3017.00	2850.00	2890.00	2953.00	2993.00	3056.00	3096.00	3159.00	Positive
COCUDAKL 20AUG2021	3096.00	2990.00	3015.00	3056.00	3081.00	3122.00	3147.00	3188.00	Positive
COCUDAKL 20SEP2021	0.00	0.00	0.00	0.00	0.00	0.00	0.00	0.00	Range
KAPAS 29APR2022	1331.50	1289.00	1305.00	1318.00	1334.00	1347.00	1363.00	1376.00	Positive

ICE MARKET

Commodity	Close	Support 3	Support 2	Support 1	Pivot Point	Resist 1	Resist 2	Resist 3	Trend
CTN21 (Jul '21)	84.85	83.63	83.95	84.22	84.54	84.81	85.13	85.40	Positive
CTV21 (Oct '21)	86.26	85.53	85.75	86.21	86.43	86.89	87.11	87.57	Positive
CTH22 (Mar '22)	85.69	84.71	84.99	85.13	85.41	85.55	85.83	85.97	Positive

ZCE MARKET

Commodity	Close	Support 3	Support 2	Support 1	Pivot Point	Resist 1	Resist 2	Resist 3	Trend
WQN21 (Jul '21)	15665.00	15443.33	15516.67	15613.33	15686.67	15783.33	15856.67	15953.33	Positive
WQU21 (Sep '21)	15865.00	15626.67	15698.33	15821.67	15893.33	16016.67	16088.33	16211.67	Positive
WQX21 (Nov '21)	16040.00	15841.67	15898.33	16011.67	16068.33	16181.67	16238.33	16351.67	Positive

CURRENCY MARKET

Commodity	Close	Support 3	Support 2	Support 1	Pivot Point	Resist 1	Resist 2	Resist 3	Trend
USDINR 28JUN2021	72.98	72.48	72.69	72.83	73.04	73.18	73.39	73.53	Negative
USDINR 28JUL2021	73.22	72.93	73.04	73.13	73.25	73.33	73.44	73.53	Negative
USDINR 27AUG2021	73.49	73.21	73.32	73.40	73.51	73.59	73.70	73.78	Negative

Spot Rate Update

7-Jun-21

Commodity	Rate
Cotton Seed Oil-Cake-Amravati	2950 - 3450
Cotton Seed Oil-Cake-Beed	2900 - 3350
Cotton Seed Oil-Cake-Jalgaon	2850 - 3300
Cotton Seed Oil-Cake-Khamgaon	3300 - 3500
Cotton Seed Oil-Cake-Arvi	2850 - 3300

Spot Rate Update

7-Jun-21

Commodity	Rate
Cotton Seed Oil-Cake-Nagpur	0 - 0
Cotton Seed Oil-Cake-Murtajapur	3300 - 3500
Cotton Seed Oil-Cake-Khamgaon	3300 - 3500
Cotton Seed Oil-Cake-Arvi	2850 - 3300
Cotton Seed Oil-Cake-Akot	2850 - 3300

MCX COTTON

Technical Chart



Open	High	Low	Close	Net Cng
24030.00	24490.00	24030.00	24380.00	450.00
OI	% OI	Volume	Trend	% Cng
5784.00	-20.92	3223.00	Positive	1.88

Fundamentals

Cotton yesterday settled up by 1.88% at 24380 amid firmness in overseas prices after a weekly federal report showed higher export sales of the natural fiber. Cotton sowing area grows despite of delays. Despite sowing of cotton stretching beyond the ideal sowing time in Punjab, it is close to reaching the target for 2021-22. The state agriculture department had the target of sowing cotton on 3.25 lakh hectares the crop had been sown over 3.01 lakh hectares. New figures show global cotton stock levels are set to increase to 22m tonnes by the end of 2020/21 as the stocks-to-use ratio declines. According to the latest update from the International Cotton Advisory Committee (ICAC), China's stocks, however, are expected to decline as the rest of the world's expands slightly. Cotton consumption is expected to increase by 2% to 25.3m tonnes as the global economy continues to recover. Decreases in Brazil, India and the US have caused a reduction in the 2020/21 global production estimate but cotton production — along with consumption and trade — are all expected to increase in 2021/22: Production is expected to increase by 5% to 25.5m tonnes, with increases in planted areas in the US and West Africa. In spot market, Cotton gained by 360 Rupees to end at 24130 Rupees. Technically market is under short covering as market has witnessed drop in open interest by -20.92% to settled at 5784 while prices up 450 rupees, now Cotton is getting support at 24110 and below same could see a test of 23840 levels, and resistance is now likely to be seen at 24570, a move above could see prices testing 24760.

Trading Idea for the day

Cotton trading range for the day is 23840-24760.

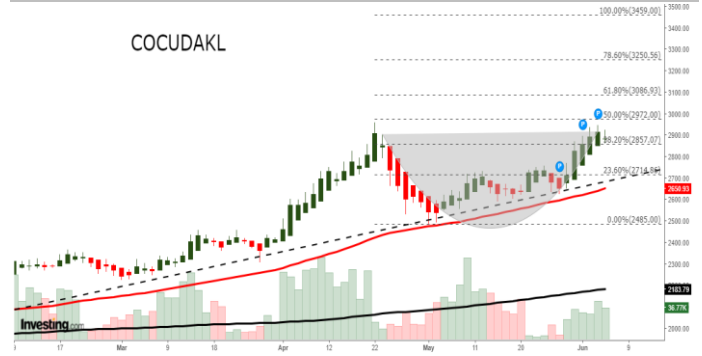
Cotton prices gained amid firmness in overseas prices after a weekly federal report showed higher export sales of the natural fiber.

Cotton stock levels are set to increase to 22m tonnes by the end of 2020/21

According to the latest update from the ICAC, China's stocks, however, are expected to decline as the rest of the world's expands slightly.

NCDEX COCUDAKL

Technical Chart



Open	High	Low	Close	Net Cng
2940.00	3033.00	2930.00	3017.00	131.00
OI	% OI	Volume	Trend	% Cng
56160.00	16.25	81270.00	Positive	4.54

Fundamentals

Cocudakl yesterday settled up by 4.54% at 3017 as Cottonseed production and quality were affected last year due to excessive rains in the key producing State of Telangana and some parts of Tamil Nadu. Support also seen amid prospects of higher exports and falling supply in the physical market. However there were worries of lockdown it is anticipated that there will be slow supply and same with demand. 2021/22 global cottonseed production is projected at nearly 44 million tons, up 5 percent from the current year. Higher forecasts for the United States, Brazil, Australia, and Mali are partially offset by declines in China. U.S. production is forecast up 781,000 tons to nearly 5 million. Waning arrivals of raw cotton due to the fag end of the season and limited stocks of cottonseed with ginners has led to a supply crunch in the market. India has produced around 36 mln bales in the ongoing 2020-21 (Oct-Sep) season, of which nearly 33 mln bales, or 92% of the stock, has already arrived in the market. Considering firm demand outlook for the commodity, the tight supply situation in cottonseed is expected to continue in the coming months as well as the new season for cotton will start only in October. In Akola spot market, Cocudakl gained by 75.85 Rupees to end at 2934.35 Rupees per 100 kgs. Technically market is under fresh buying as market has witnessed gain in open interest by 16.25% to settled at 56160 while prices up 131 rupees, now Cocudakl is getting support at 2953 and below same could see a test of 2890 levels, and resistance is now likely to be seen at 3056, a move above could see prices testing 3096.

Trading Idea for the day

Cocudakl trading range for the day is 2890-3096.

Cocudakl prices seen supported as Cottonseed production and quality were affected

However there were worries of lockdown it is anticipated that there will be slow supply and same with demand.

2021/22 global cottonseed production is projected at nearly 44 million tons, up 5 percent from the current year.

COTTON PRICE MOVEMENT SINCE 2012

Year	Harvesting					Sowing	Growth						Harvesting	Crop Calendar
	JAN	FEB	MAR	APR	MAY	JUN	JUL	AUG	SEP	OCT	NOV	DEC		
2012	17420.00 3.75	17080.00 -1.95	17540.00 2.69	16490.00 -5.99	15670.00 -4.97	16430.00 4.85	17750.00 8.03	17990.00 1.35	16050.00 -10.78	16140.00 0.56	16050.00 -0.56	16220.00 1.06	-570.00 -3.39	
2013	16360.00 0.86	17620.00 7.70	19330.00 9.70	17930.00 -7.24	18230.00 1.67	19330.00 6.03	20160.00 4.29	22690.00 12.55	21760.00 -4.10	20570.00 -5.47	18400.00 -10.55	19340.00 5.11	3120.00 19.24	
2014	20490.00 5.95	20180.00 -1.51	20280.00 0.50	20560.00 1.38	19920.00 -3.11	20250.00 1.66	18980.00 -6.27	17970.00 -5.32	16540.00 -7.96	15890.00 -3.93	15810.00 -0.50	15870.00 0.38	-3470.00 -17.94	
2015	14490.00 -8.70	15200.00 4.90	15290.00 0.59	16320.00 6.74	16520.00 1.23	16250.00 -1.63	16170.00 -0.49	16310.00 0.87	15780.00 -3.25	15580.00 -1.27	15770.00 1.22	16340.00 3.61	470.00 2.96	
2016	16260.00 -0.49	16110.00 -0.92	15750.00 -2.23	16740.00 6.29	17730.00 5.91	20080.00 13.25	22490.00 12.00	19610.00 -12.81	19840.00 1.17	18570.00 -6.40	18880.00 1.67	19020.00 0.74	2680.00 16.40	
2017	20290.00 6.68	20690.00 1.97	20900.00 1.01	20600.00 -1.44	20500.00 -0.49	20230.00 -1.32	20390.00 0.79	18650.00 -8.53	18530.00 -0.64	18440.00 -0.49	18210.00 -1.25	19710.00 8.24	690.00 3.63	
2018	20050.00 1.73	20640.00 2.94	20430.00 -1.02	20720.00 1.42	22060.00 6.47	22350.00 1.31	24120.00 7.92	22860.00 -5.22	21840.00 -4.46	22250.00 1.88	21390.00 -3.87	21090.00 -1.40	1380.00 7.00	
2019	20980.00 -0.52	20480.00 -2.38	21490.00 4.93	22460.00 4.51	21770.00 -3.07	21540.00 -1.06	20750.00 -3.67	19570.00 -5.69	19870.00 1.53	19320.00 -2.77	19230.00 -0.47	19570.00 1.77	-1520.00 -7.21	
2020	19410.00 -0.82	18200.00 -6.23	16230.00 -10.82	16350.00 0.74	15810.00 -3.30	15760.00 -0.32	16320.00 3.55	17730.00 8.64	18210.00 2.71	19430.00 6.70	20170.00 3.81	20630.00 2.28	1060.00 5.42	
2021	20950.00 1.55	21890.00 4.49	21410.00 -2.19	21880.00 2.20	23590.00 7.82								2960.00 14.35	
Average	1.00	0.90	0.32	0.86	0.81	2.53	2.91	-1.57	-2.86	-1.24	-2.19	2.23	Average	

COCUDAKL PRICE MOVEMENT SINCE 2012

	JAN	FEB	MAR	APR	MAY	JUN	JUL	AUG	SEP	OCT	NOV	DEC	Growth
2012	1288.00 3.70	1216.00 -5.59	1383.00 13.73	1269.00 -8.24	1119.00 -11.82	1279.00 14.30	1528.00 19.47	1527.00 -0.07	1328.00 -13.03	1437.00 8.21	1397.00 -2.78	1379.00 -1.29	137.00 11.03
2013	1321.00 -4.21	1469.00 11.20	1523.00 3.68	1408.00 -7.55	1572.00 11.65	1523.00 -3.12	1568.00 2.95	1833.00 16.90	1470.00 -19.80	1494.00 1.63	1400.00 -6.29	1474.00 5.29	95.00 6.89
2014	1529.00 3.73	1522.00 -0.46	1465.00 -3.75	1572.00 7.30	1493.00 -5.03	1676.00 12.26	1670.00 -0.36	1723.00 3.17	1368.00 -20.60	1358.00 -0.73	1331.00 -1.99	1422.00 6.84	-52.00 -3.53
2015	1446.00 1.69	1524.00 5.39	1707.00 12.01	1798.00 5.33	1828.00 1.67	1798.00 -1.64	1953.00 8.62	2043.00 4.61	1560.00 -23.64	1657.00 6.22	1712.00 3.32	2085.00 21.79	663.00 46.62
2016	2038.00 -2.25	2209.00 8.39	2236.00 1.22	2296.00 2.68	2334.00 1.66	2548.00 9.17	2576.00 1.10	2600.00 0.93	1971.00 -24.19	1909.00 -3.15	1960.00 2.67	2012.00 2.65	-73.00 -3.50
2017	2268.00 12.72	2301.00 1.46	2168.00 -5.78	2014.00 -7.10	1848.00 -8.24	1652.00 -10.61	1477.00 -10.59	1560.00 5.62	1519.00 -2.63	1507.00 -0.79	1629.50 8.13	1792.50 10.00	-219.50 -10.91
2018	1742.50 -2.79	1569.00 -9.96	1405.00 -10.45	1196.00 -14.88	1359.50 13.67	1570.50 15.52	1852.50 17.96	1668.00 -9.96	1660.00 -0.48	1794.00 8.07	1907.00 6.30	1926.00 1.00	133.50 7.45
2019	2045.50 6.20	1936.00 -5.35	2281.00 17.82	2486.00 8.99	2788.00 12.15	2767.00 -0.75	3338.00 20.64	3251.00 -2.61	2135.00 -34.33	2280.50 6.81	1974.00 -13.44	2139.00 8.36	213.00 11.06
2020	1783.00 -16.64	1598.00 -10.38	2064.00 29.16	1905.00 -7.70	1949.00 2.31	1961.00 0.62	1775.00 -9.48	1880.00 5.92	1806.00 -3.94	1851.00 2.49	2164.00 16.91	2003.00 -7.44	-136.00 -6.36
2021	2079.00 3.79	2220.00 6.78	2388.00 7.57	2522.00 5.61	2755.00 9.24								752.00 37.54
Average	1.81	0.59	5.62	-1.97	2.56	4.23	5.91	2.82	-16.01	3.66	0.71	5.76	Average

KEDIA ADVISORY

KEDIA STOCKS & COMMODITIES RESEARCH PVT LTD.
Mumbai. INDIA.

For more details, please contact:

Mobile: +91 9323406035 / 9320096333 / 9619551022

Email: info@kediaadvisory.com

URL: www.kediaadvisory.com

SEBI REGISTRATION NUMBER - INH000006156

General Disclaimers: This Report is prepared and distributed by Kedia Stocks & Commodities Research Pvt Ltd. for information purposes only. The recommendations, if any, made herein are expression of views and/or opinions and should not be deemed or construed to be neither advice for the purpose of purchase or sale through KSCRPL nor any solicitation or offering of any investment /trading opportunity. These information / opinions / views are not meant to serve as a professional investment guide for the readers. No action is solicited based upon the information provided herein. Recipients of this Report should rely on information/data arising out of their own investigations. Readers are advised to seek independent professional advice and arrive at an informed trading/investment decision before executing any trades or making any investments. This Report has been prepared on the basis of publicly available information, internally developed data and other sources believed by KSCRPL to be reliable. KSCRPL or its directors, employees, affiliates or representatives do not assume any responsibility for, or warrant the accuracy, completeness, adequacy and reliability of such information / opinions / views. While due care has been taken to ensure that the disclosures and opinions given are fair and reasonable, none of the directors, employees, affiliates or representatives of KSCRPL shall be liable for any direct, indirect, special, incidental, consequential, punitive or exemplary damages, including lost profits arising in any way whatsoever from the information / opinions / views contained in this Report. The possession, circulation and/or distribution of this Report may be restricted or regulated in certain jurisdictions by appropriate laws. No action has been or will be taken by KSCRPL in any jurisdiction (other than India), where any action for such purpose(s) is required. Accordingly, this Report shall not be possessed, circulated and/ or distributed in any such country or jurisdiction unless such action is in compliance with all applicable laws and regulations of such country or jurisdiction. KSCRPL requires such recipient to inform himself about and to observe any restrictions at his own expense, without any liability to KSCRPL. Any dispute arising out of this Report shall be subject to the exclusive jurisdiction of the Courts in India.